

Kodak

Picture Saver
Scanning Systems
PS50, PS55 and PS80

Kodak Photo Selector Accessory

Scan album/scrapbook pages and
auto-save individual images



If you have a **Kodak** Picture Saver Scanning System PS50, PS55 or PS80, you can streamline image capture and protect valuable older photos/albums with the **Kodak** Photo Selector Accessory.

Functionality and advantages

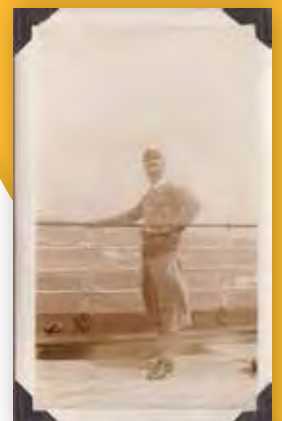
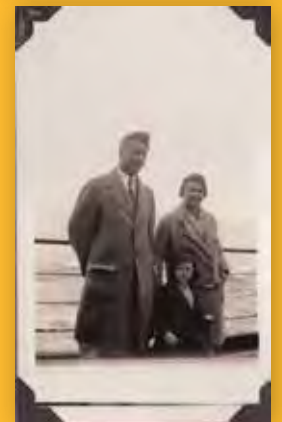
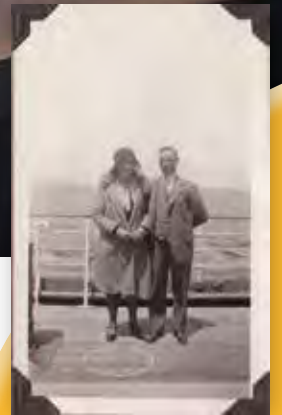
- Extracts individual images from a composite image automatically
- Ideal for multi-picture photo album and scrapbook pages
- No need to remove plastic page protectors
- Eliminates risk of damage to fragile old photos and documents
- Once images are separated, post-scan, you can use standard photo editing options to enhance images, remove red eye, etc.
- Saves scanning prep time and provides peace of mind to customers

All you need to get started

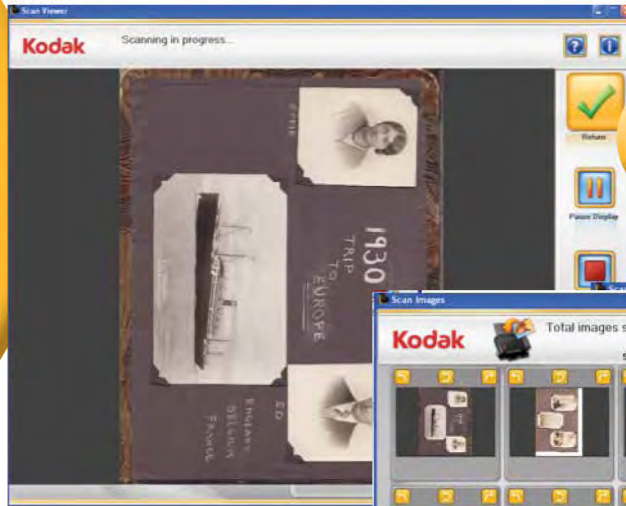
- Purchase a **Kodak** Legal Size Flatbed Accessory or **Kodak** A3 Size Flatbed Accessory along with the Photo Selector Accessory
- Simply install the **Kodak** Photo Selector Accessory Software and the functionality is added



See back side for screen shot examples >

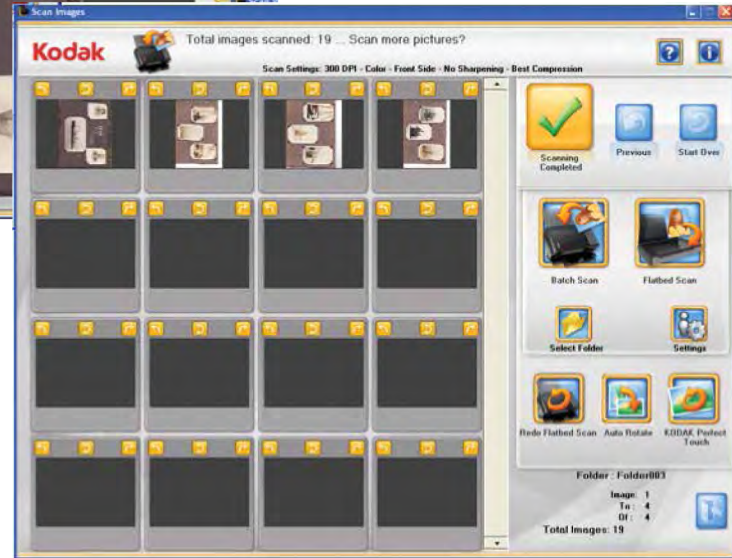


Faster, safer album page scanning with the **Kodak Photo Selector** Accessory



1.

Scan one or more album pages using your **Kodak Flatbed Accessory**.



2.

Selector automatically detects and marks photos to be segmented/individualized. Photos are outlined in blue and shown at right.



3.

Operator can adjust area captured or delete photos. After segmenting, original flatbed scan and individual images are returned to Photo Scanning Application.



For more information,



Tel +1-360.638.2591 email info@brookeintl.com
www.BrookeProductsInc.com

© 2014 Kodak Alaris Inc. Kodak Alaris will be the Company's trade name for its global business. The Kodak trademark and trade dress are used under license from Eastman Kodak Company.

Subject to technical change without notice. 2/14

Kodak
 Service & Support
 for Document Imaging Solutions

Kodak alaris